

HEALTH CARE SYSTEM

in



Virginia Atanasova

Euromphamili, Rennes

2005



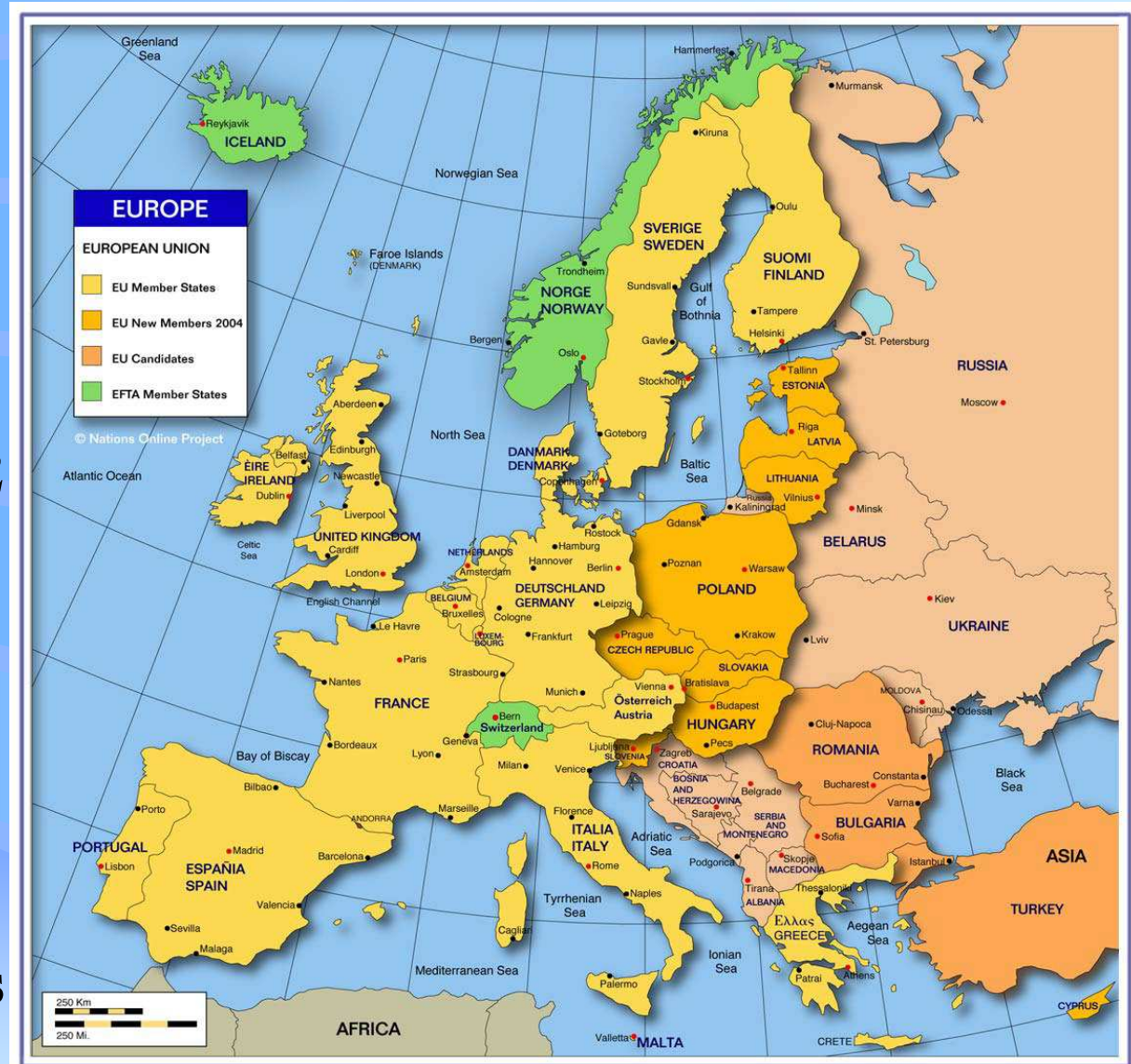
Bulgaria

Land Area 111 000 km²

Capital City Sofia

Population 7 823 557

68% lives in urban areas



Health Indicators

	1989	1995	2000	2003
% of population aged 65+ years	12.61	15.01	16.25	17.06**
Female life expectancy	74.89	74.89	75.09	75.4*
Male life expectancy	62.29	67.4	68.48	68.5*
Birth rates	12.49	8.56	9.02	8.6
Mortality rates*	12.5	13.6	14.2	14.3
Infant mortality	14.37	14.8	13.31	12.3**

Source: WHO Regional Office for Europe health for all databases

* www.nsi.bg

** www.gesource.ac.uk

Financial Frame

GDP - \$ 15 billion: **4.73%** for health care
(8.98% average EU)

Health expenditure per capita - **\$ 214.41**
(\$ 2128.12 average Europe)

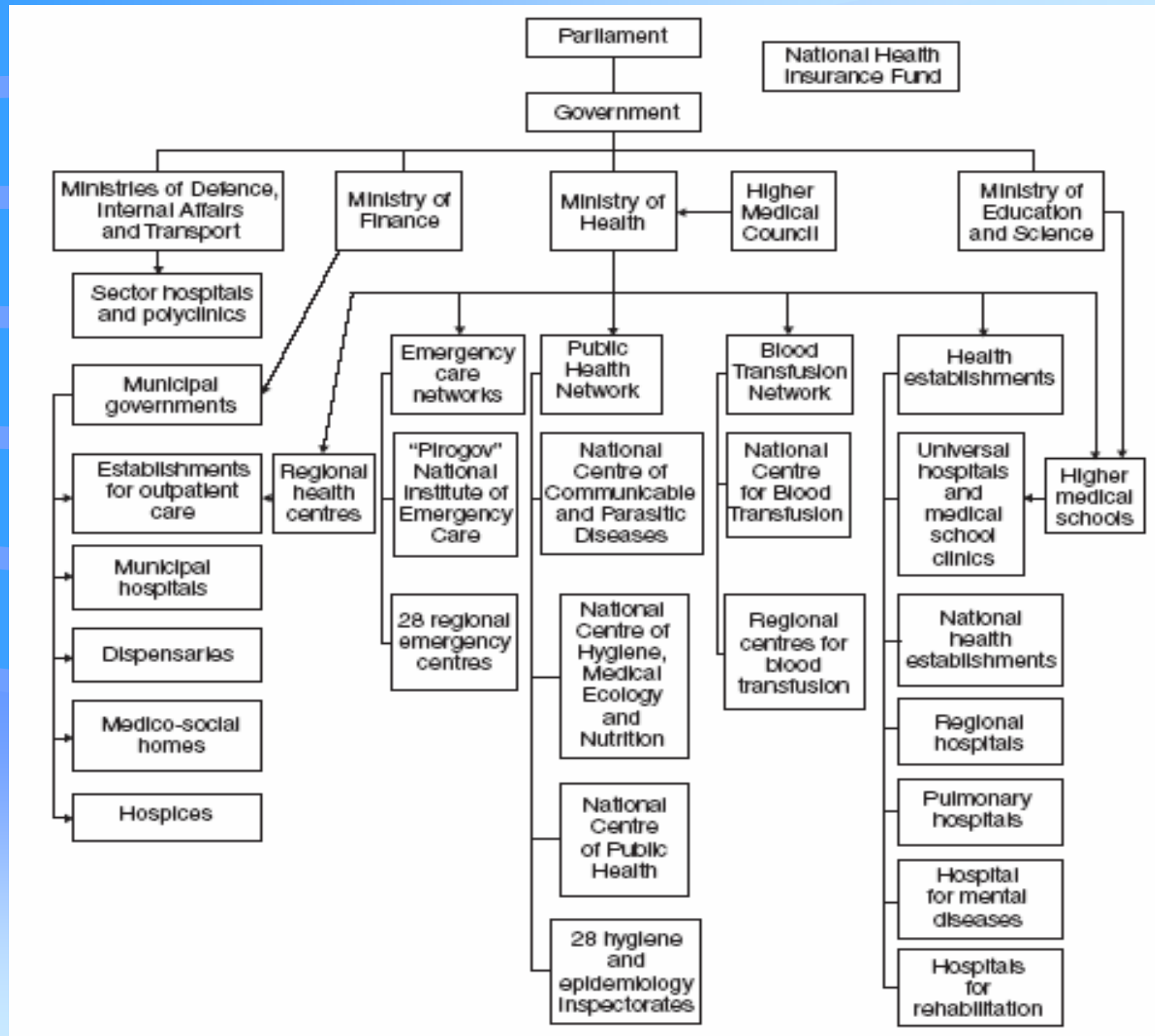
Source: WHO Regional Office for Europe health for all databases

Assurance with hospital beds and medical staff of 100 000 people

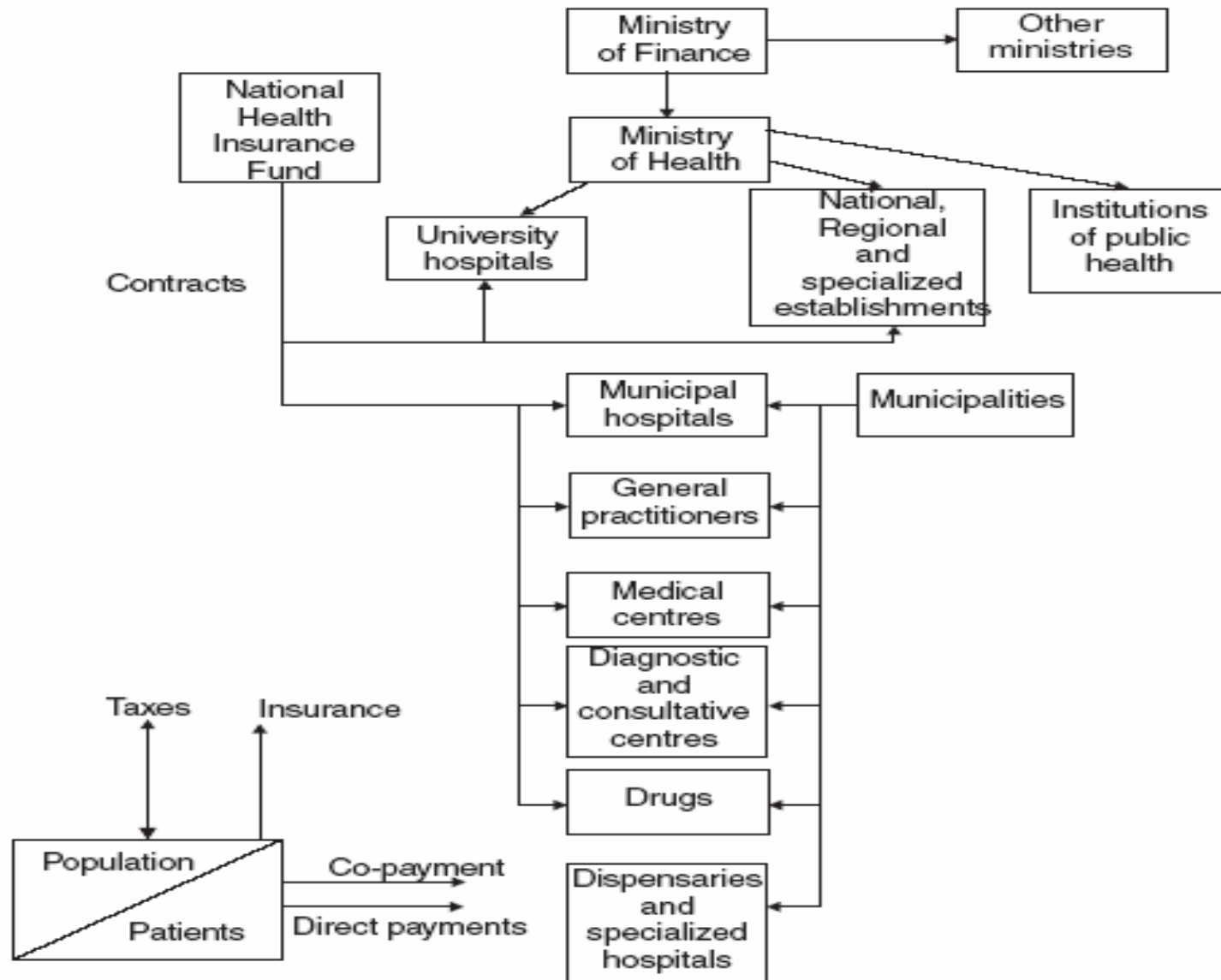
	<i>1995</i>	<i>2000</i>	<i>2002</i>
Assurance with hospital beds	1036.72	741.13	648.5
Assurance with doctors	345.81	336.91	351.9
Assurance with nurses	607.12	385.29	362.3
Assurance with midwives	79.13	50.56	43.63
Assurance with dentists	62.5	82.96	78.08

Source: WHO Regional Office for Europe health for all databases

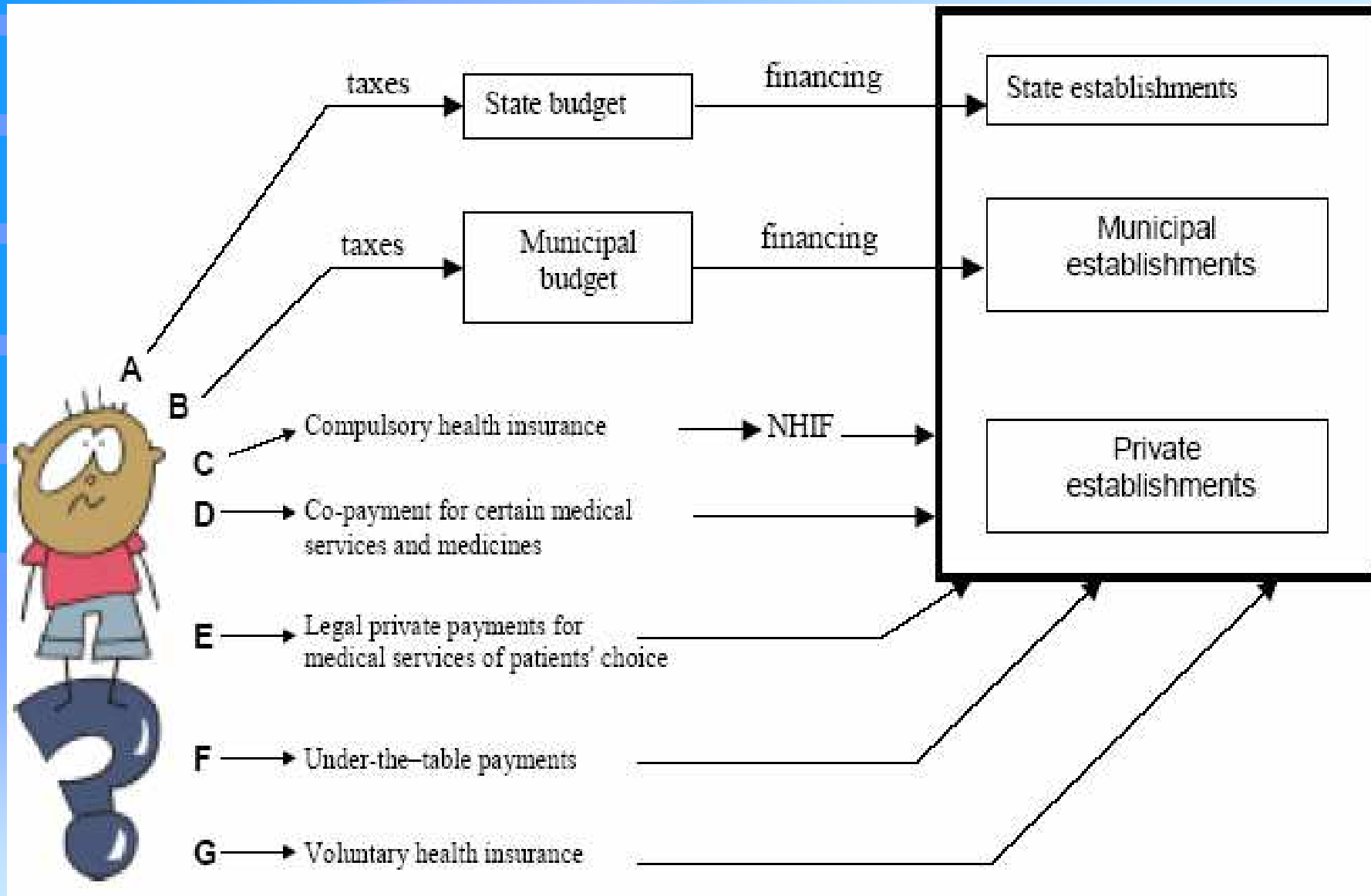
Organizational Structure of the HCS



Financing of Health Care Establishment



Financing of Health Care Establishment



Health Insurance System in Bulgaria

Semashko state financed model
(until 1999)

Insurance based system
(in 2000)

Compulsary health insurance contributions
6% of the monthly income
shering the contribution

by the employer

by the employee

2000-2001	80:20
2002	75:25
2003	70:30
2004	65:35
2005	60:40
2006	55:45
2007	50:50

Providers in the HCS

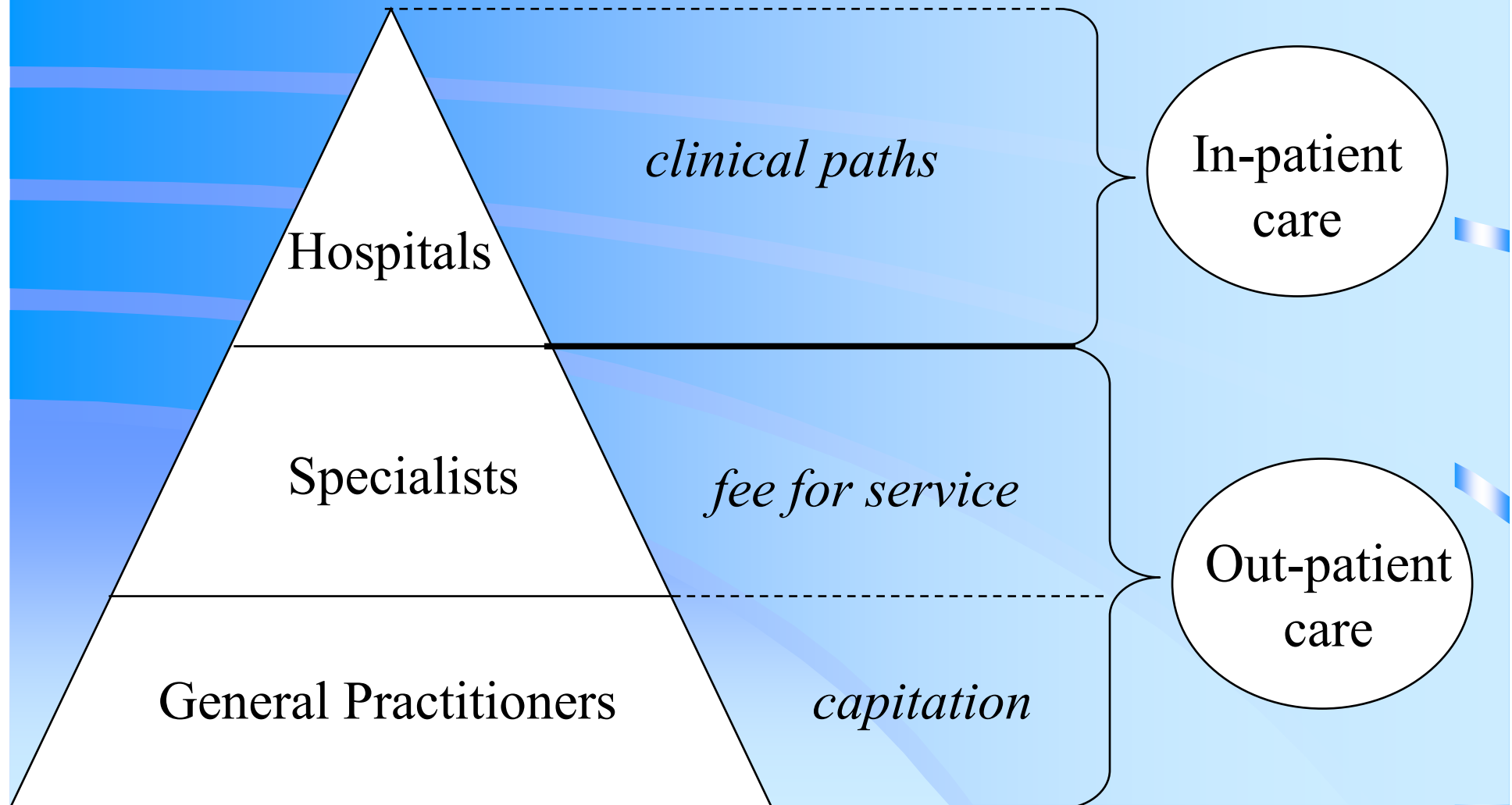
1. Institutions for outpatient care:

- Individual - and group practices for primary health care
- Practices for specialized medical care, medical centers, diagnostic-consultative centers
- Medical-diagnostic and medical-technical laboratories

2. Institutions for hospital care:

- Hospitals for active treatment
- Hospitals for continuous long-term treatment
- Hospitals for rehabilitation

Payment Model



Patients Access to Medical Services

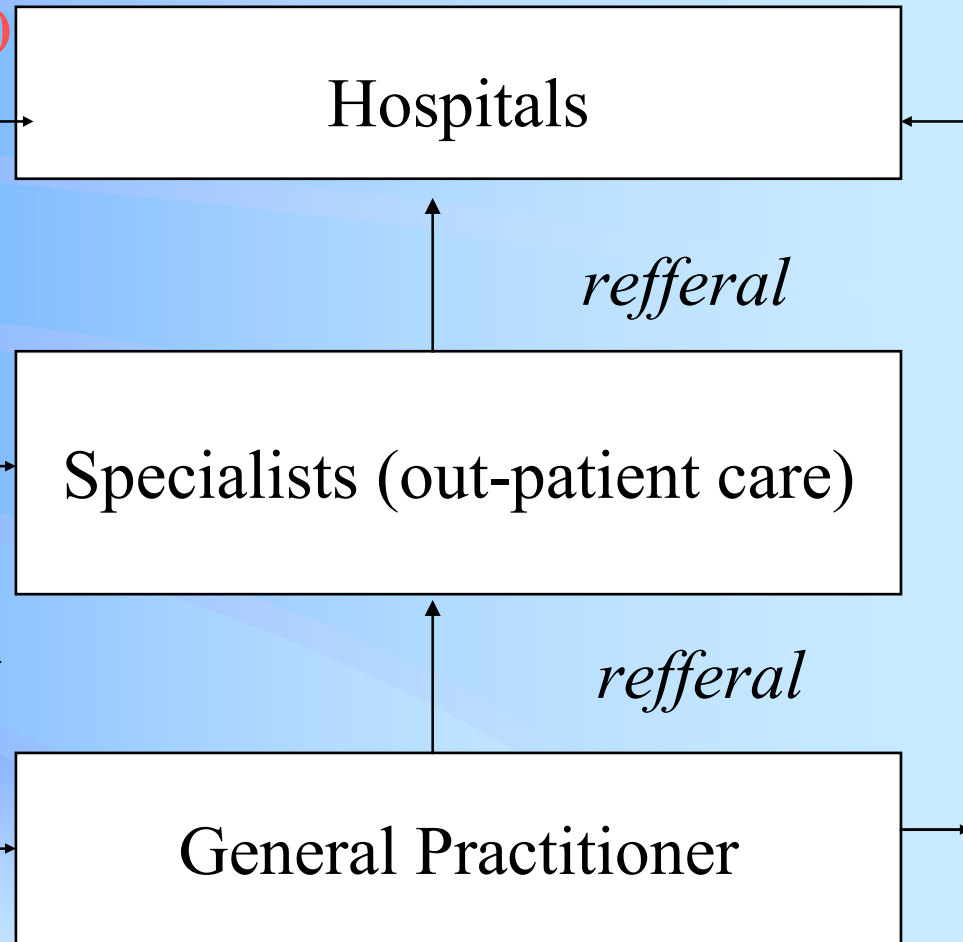
2 % of the minimal salary, but for no more than 20 days yearly - (every day of hospital treatment)



out-of pocket

out-of pocket

1 % of the minimal salary - (every visit)



Conclusion

- Bulgaria has introduced radical reform of the HCS within a relatively short time, and under conditions of economic crisis
- The reform has involved all key areas of HCS: *organization, delivery, financing, and training of human resources*
 - adoption of the laws related to Health Care
 - patient choice of GP and Dentist
 - reduction in hospitals bed numbers
 - new hospital payment methods
 - consumer choice of privately provided services

THANK YOU!

БЛАГОДАРЯ ВИ!



Bulgaria – piece of paradise!